

# HS2

## Notice of works Denham to West Hyde area

March 2020 | [www.hs2.org.uk](http://www.hs2.org.uk)

High Speed Two (HS2) is the new high speed railway for Britain. To prepare for the construction of the Colne Valley Viaduct we will be continuing our works in the area.

### What works have been taking place?

We wrote to you last year about the various works which help develop our understanding of the ground conditions. We have been continuing with our programme of ground investigation surveys in this area and we anticipate that this will continue over the coming months, into the summer. These surveys have provided us with important information about the type, strength and details of the land where the viaduct will be built.

We've also had load test piles taking place near Denham Water-ski club. These piles have been installed to verify the ground characteristics and involve drilling into the ground and installing concrete and steel reinforcement. These have been important tests, as they help us understand how the ground will support the future viaduct as well as verifying that the aquifer will be protected.

### What other work will be taking place?

Over the coming months we have several important areas of work which need to take place ahead of our main construction work:

- Setting up small site compounds with welfare facilities and storage for our future works.
- Building temporary haul roads including the use of track matting. These matting panels are placed on the existing ground surface to help our vehicles move around the area.
- Diverting water and electric utilities ahead of building the viaduct and the haul road. These works will be completed in a way that we ensure we do not affect local utility supplies.
- Continuing archaeological investigations
- Undertaking ecology works, such as moving species to our habitat mitigation sites

**If you have a question about HS2 or our works, please contact our HS2 Helpdesk team on 08081 434 434 or email [hs2enquiries@hs2.org.uk](mailto:hs2enquiries@hs2.org.uk)**

### Notification



#### Duration of works

From March 2020, throughout 2020

Working hours Monday to Friday 8am - 6pm and Saturday 8am - 1pm

We may also be on site for one hour's start up and shutdown outside of these times

#### What to expect

Some additional traffic on local roads

Noise from machinery used for the works

Off-peak temporary traffic signals

Site compounds with 24 hour site security and temporary lighting

Temporary public right of way (footpath) closure

#### What we will do

Manage the works to minimise disturbance

# Notice of works Denham to West Hyde area

[www.hs2.org.uk](http://www.hs2.org.uk)

Notification



## Vegetation clearance and fencing works

Ahead of these works taking place we will need to undertake preparatory activities across the area, including vegetation clearance and putting up fencing. The vegetation clearance will include tree felling to create a perimeter strip, where our fencing will be installed. The fencing will help us keep the public safe from our future works. We will need to undertake further vegetation clearance within the site once the fencing is up and we will also create a temporary access road.

## Impact on roads and public right of way

During this phase of the works we will need a temporary off-peak lane closure on the A412, near the Denham Water ski club entrance. This may be in place for up to four weeks and will be between the hours of 09:30 and 15:30. This is to allow us to work on both sides of the highway, initially to form the new entrance and then switching this to the opposite carriageway to undertake works alongside the A412. The lane closure will be managed by traffic lights during these hours and the approximate location of the traffic lights is shown on the maps in this notification. There will also be advance signage put out on the road ahead of the traffic management being required to warn road users. To ensure our work in the area of Harefield Moor Lake and Moorhall Road is carried out safely the public access path from Moorhall Road will be closed, and signs installed to show alternative access from Boyers Pit, off Moorhall Road. All of these works are subject to the relevant consents and approvals being in place.

# Notice of works Denham to West Hyde area

[www.hs2.org.uk](http://www.hs2.org.uk)

Notification



## Why are the works taking place now?

Our ecological works need to take place ahead of our main works starting this year.

The High-Speed Rail (London - West Midlands) Act 2017 includes Environmental Minimum Requirements and a Code of Construction Practice which sets out how we undertake our construction activities. This includes analysis of existing ecology and explains how we will mitigate this during our construction.

Substantial ecological survey works have taken place in this area since 2012 as part of the Environmental Statement. These surveys have provided a detailed understanding of the ecology in the area and allowed us to develop mitigation plans for translocation of the ecology and removing vegetation.

## How will you ensure that you do not affect nesting birds and other protected and non-protected ecology?

Prior to any vegetation removal, an ecologist will survey the area to be cleared for ecology and record any findings.

The findings from these surveys, along with data from surveys are used to identify those areas that can be cleared and those which cannot yet, due to the presence of protected ecology.

Any vegetation that cannot be removed due to the presence of protected ecology will be left until further surveys confirm that the ecology is no longer present.

## Do we have licences for this work?

Yes, we will only undertake work with the necessary licences, where they are required. Other works will progress in locations where species constraints are absent, and where licences are not required.

## Will you impact on ancient woodland?

The works will be carried out close to ancient woodland. Before any vegetation clearance the boundary of the ancient woodland will be identified, and mitigations will be put in place to protect these areas.



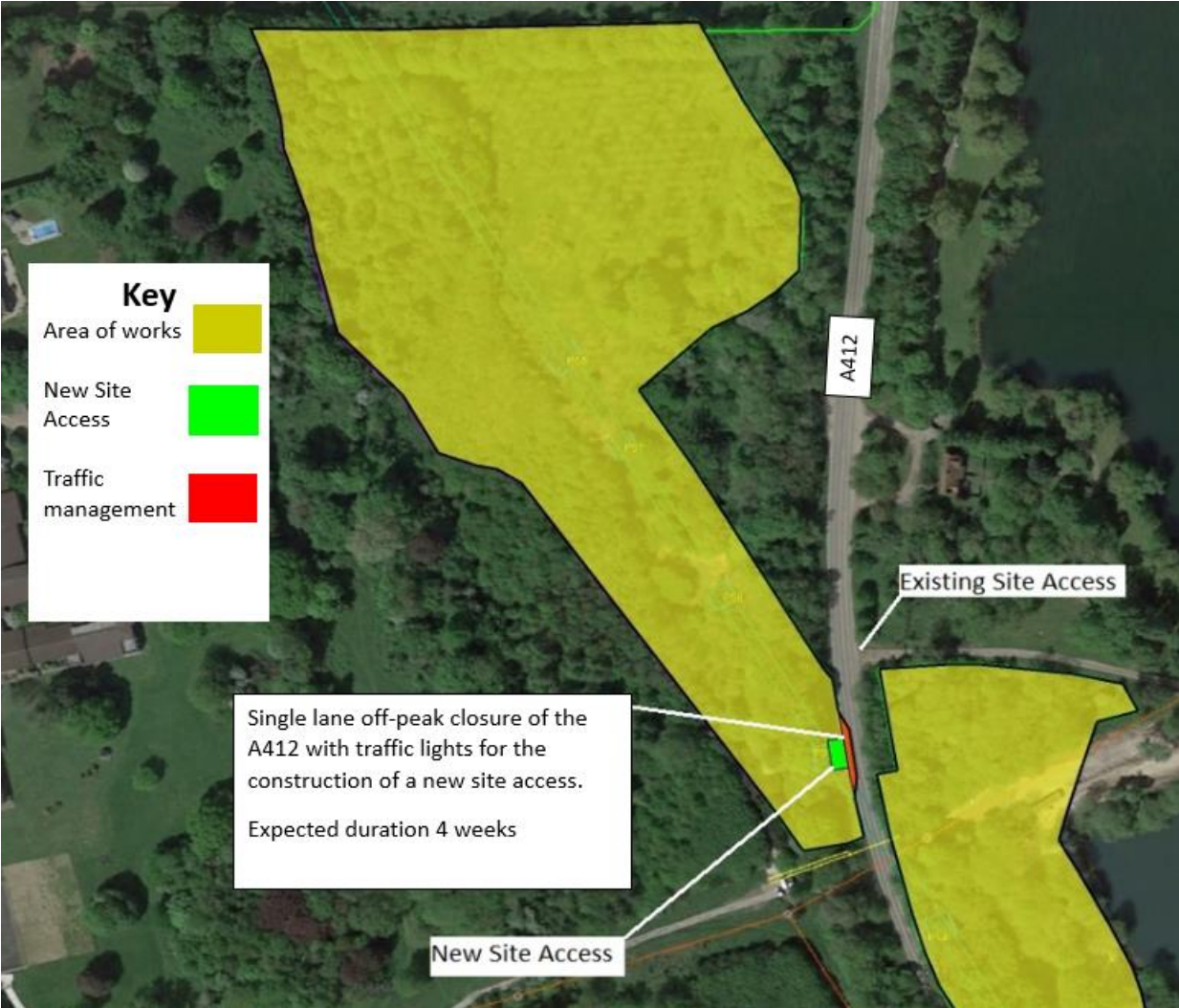
# Notice of work Denham to West Hyde area

Notification



[www.hs2.org.uk](http://www.hs2.org.uk)

Location of traffic light new site access (subject to highway authority consents)



## Keeping you informed

We are committed to keeping you informed about work on HS2. This includes ensuring you know what to expect and when to expect it, as well as how we can help.

### Residents' Charter and Commissioner

The Residents' Charter is our promise to communicate as clearly as we possibly can with people who live along or near the HS2 route. [www.gov.uk/government/publications/hs2-residents-charter](http://www.gov.uk/government/publications/hs2-residents-charter)

We also have an independent Residents' Commissioner whose job is to make sure we keep to the promises we make in the Charter and to keep it under constant review. Find reports at: [www.gov.uk/government/collections/hs2-ltd-residents-commissioner](http://www.gov.uk/government/collections/hs2-ltd-residents-commissioner)

You can contact the Commissioner at: [residentscommissioner@hs2.org.uk](mailto:residentscommissioner@hs2.org.uk)

### Construction Commissioner

The Construction Commissioner's role is to mediate and monitor the way in which HS2 Ltd manages and responds to construction complaints. You can contact the Construction Commissioner by emailing: [complaints@hs2-cc.org.uk](mailto:complaints@hs2-cc.org.uk)

### Property and compensation

You can find out all about HS2 and properties along the line of route by visiting: [www.gov.uk/government/collections/hs2-property](http://www.gov.uk/government/collections/hs2-property)  
Find out if you're eligible for compensation at: [www.gov.uk/claim-compensation-if-affected-by-hs2](http://www.gov.uk/claim-compensation-if-affected-by-hs2)


### Holding us to account

If you are unhappy for any reason you can make a complaint by contacting our HS2 Helpdesk team. For more details on our complaints process, please visit our website: [www.hs2.org.uk/how-to-complain](http://www.hs2.org.uk/how-to-complain)

## Contact Us

Contact our HS2 Helpdesk team all day, every day of the year on:

 Freephone **08081 434 434**

 Minicom **08081 456 472**

 Email **[hs2enquiries@hs2.org.uk](mailto:hs2enquiries@hs2.org.uk)**

Write to:

**FREEPOST**

**HS2 Community Engagement**

Website **[www.hs2.org.uk](http://www.hs2.org.uk)**

To keep up to date with what is happening in your local area, visit: **[www.hs2inyourarea.co.uk](http://www.hs2inyourarea.co.uk)**

**Please contact us if you'd like a free copy of this document in large print, Braille, audio or easy read. You can also contact us for help and information in a different language.**

HS2 Ltd is committed to protecting personal information. If you wish to know more about how we use your personal information please see our Privacy Notice <https://www.gov.uk/government/publications/high-speed-two-ltd-privacy-notice>

**Reference number: FUS\_AWN\_0052**

High Speed Two (HS2) Limited, registered in England and Wales.  
Registered office: Two Snowhill, Snow Hill Queensway, Birmingham B4 6GA.  
Company registration number: 06791686. VAT registration number: 181 4312 30.